

Astra Quanta

High-powered backhaul for
noisy environment

Frequency range

- 4.9 – 6.0 GHz

Max. Capacity

- 650 Megabit per second
- 1,200,000 packets per second

Unique interference mitigation capabilities



Quanta offers a unique combination of high performance, affordability and ease of installation

Superior Tx Power in the top-speed mode

At the highest modulation, prepare to be blown away by Astra Quanta's exceptional power, surpassing 802.11ac based systems by a whopping 8 times

Outstanding performance in high interference

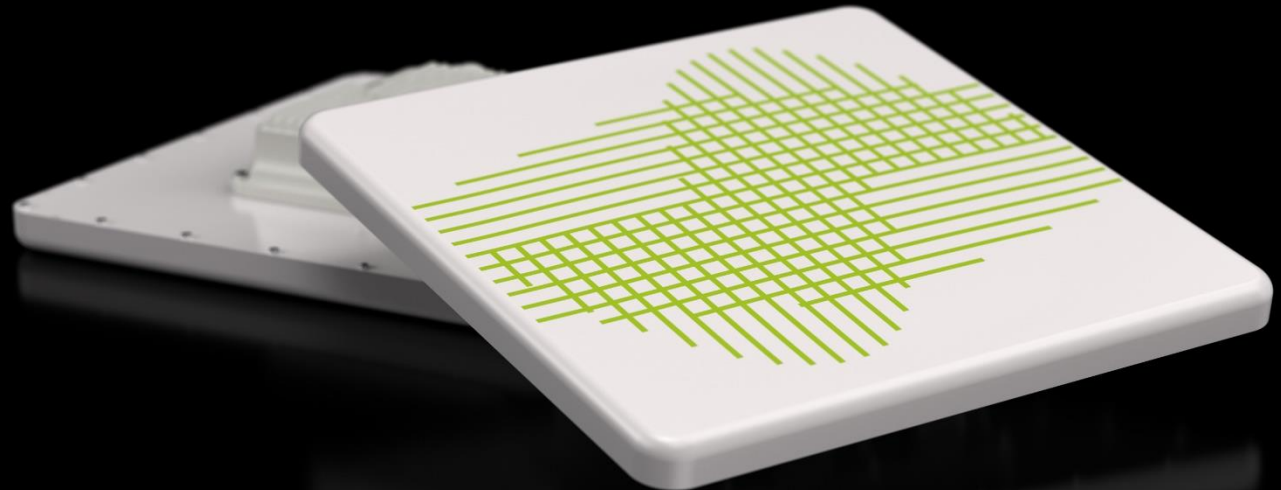
Due to its support for 14 modulation-coding schemes, Quanta is capable of selecting the most suitable MCS for each polarization, even when operating in high-interference environments

Ease of Installation and robustness

The quick and easy installation process reduces field deployment costs while facilitating rapid service delivery. Quanta guarantees stable connectivity, even in adverse weather conditions, including extreme temperatures ranging from -55°C to +60°C

Interference Mitigation

The Instant DFS technology allows automatic frequency channel change in case of congestion or radar detection, all achieved with zero outage. Thanks to support of H-FDD Quanta identifies and selects uplink and downlink channels independently



Astra Quanta model range: 4 GHz

Component	Quanta 4
Model	Q4-E
Device description	External antenna subscriber terminal unit
Throughput	Up to 650 Mbps net throughput
Distance	Up to 200+ km
Frequency Bands	4000 – 5000 MHz
Antenna	Connectorized antenna (2 x N-type connectors)
Wired interfaces	Combo: 1x Gigabit Ethernet port (RJ45), 1x SFP
Power consumption	Up to 15 W
Form Factor and Dimensions	Outdoor Unit (ODU): 188 x 190 x 86 mm, 1.2 kg
	Indoor Unit IDU-CPE-G(24W) 97x53.5x33.5 mm, 0.133 kg

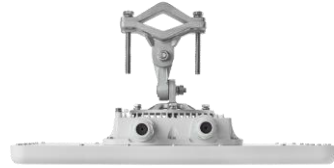


Astra Quanta model range: 5 GHz



Component	Quanta 5			
Model	Q5-23	Q5-25	Q5-28	Q5-E
Device description	Integrated antenna subscriber terminal unit			External antenna subscriber terminal unit
Throughput	Up to 650 Mbps net throughput			
Distance	Up to 40 km	Up to 60 km	Up to 80 km	Up to 200+ km
Frequency Bands	4900 – 6000 MHz			
Antenna	23 dBi dual-pol integrated antenna 10x10 deg	25 dBi dual-pol integrated antenna 8x8 deg	28 dBi dual-pol integrated antenna 5x5 deg	Connectorized antenna (2x N-type connectors)
Wired interfaces	Combo: 1x Gigabit Ethernet port (RJ45), 1x SFP			
Power consumption	Up to 15 W			
Form Factor and Dimensions	Outdoor Unit (ODU): 305 x 305 x 66 mm, 1.75 kg	Outdoor Unit (ODU): 350 x 350 x 71.5 mm, 2.3 kg	Outdoor Unit (ODU): 600 x 600 x 68 mm, 5.8 kg	Outdoor Unit (ODU): 188 x 190 x 86 mm, 1.2 kg
	Indoor Unit IDU-CPE-G(24W) 97x53.5x33.5 mm, 0.133 kg			

Astra Quanta model range: 6 GHz



Component	Quanta 6		
Model	Q6-25	Q6-28	Q6-E
Device description	Integrated antenna subscriber terminal unit		External antenna subscriber terminal unit
Throughput	Up to 650 Mbps net throughput		
Distance	Up to 60 km	Up to 80 km	Up to 200+ km
Frequency Bands	6000 – 6425 MHz		
Antenna	25 dBi dual-pol integrated antenna 8x8 deg	28 dBi dual-pol integrated antenna 5x5 deg	Connectorized antenna (2 x N-type connectors)
Wired interfaces	Combo: 1x Gigabit Ethernet port (RJ45), 1x SFP		
Power consumption	Up to 15 W		
Form Factor and Dimensions	Outdoor Unit (ODU): 350 x 350 x 71.5 mm, 2.3 kg	Outdoor Unit (ODU): 600 x 600 x 68 mm, 5.8 kg	Outdoor Unit (ODU): 188 x 190 x 86 mm, 1.2 kg
	Indoor Unit IDU-CPE-G(24W) 97x53.5x33.5 mm, 0.133 kg		

Radio features

Radio technology: MIMO 2x2, SC-FDE

Modulation types: 14 MCS – from QPSK to QAM256

Duplex method: TDD, H-FDD

Channel width: 3.5, 5, 7, 10, 14, 15, 20, 28, 30, 40, 50, 56 MHz

Air frame Configurable: from 1 to 10 ms

Uplink / Downlink ratio Configurable: from 50:50 to 92:8, in any direction

DFS / Radar detection / Instant DFS

Automatic Bitrate Control

Automatic Transmit Power Control

Automatic Distance Learning

Spectrum Analyzer mode



- Wide range of channel widths
- Built-in spectrum analyzer and antenna alignment tools
- Easy operation due to automatic control options

Networking

Packet classification: 802.1p

Network protocols: VLAN

Jumbo frame support:
Up to 9038 bytes

Wired Interfaces

Ethernet Combo: 1x Gigabit Ethernet port (RJ45), 1x SFP
Q5-18: 1x Gigabit Ethernet port (RJ45)

PoE 802.3at or Astra Wireless
proprietary passive PoE

Quality of Service:

Prioritization: Supported

8 priority queues

IEEE 802.1q support

Security:

Management protocols: HTTP, HTTPS, SSH, SNMP, Telnet

Password protection

Secure authorization via RADIUS server

Standard compliance

Radio:

ETSI EN 301 893 v.2.1.1;

ETSI EN 302 502 v.2.1.1;

FCC part 15.407

EMC:

ETSI EN 301 489-1 v.2.1.1;

ETSI EN 301 489-17 v.3.1.1;

FCC Part 15 Class B

Safety:

EN 62368-1:2014+A11:2017;

UL 62368-1:2014,

EN 62311:2008

RoHS3:

EN IEC 63000:2018

Lightning protection:

IEC 61000-4-2:

+/-4kV (contact discharge),
+/-8kV (air discharge);

IEC 61000-4-4:

+/-0.5kV;

IEC 61000-4-5:

+/-1kV (line-to-ground),
+/-0.5kV (line-to-line)

Operation options

Power options:

110-240 VAC @ 50/60 Hz

±43..56 VDC

802.3at or Proprietary PoE

Outdoor Unit environmental conditions:

40..+60°C, can be extended to -
55..+60°C (models with "t" index in PN)

100% humidity, condensing

Dust and water protection IP66, IP67

Wind load 160 km/h, operational; 200
km/h, survival

Indoor Unit environmental conditions:

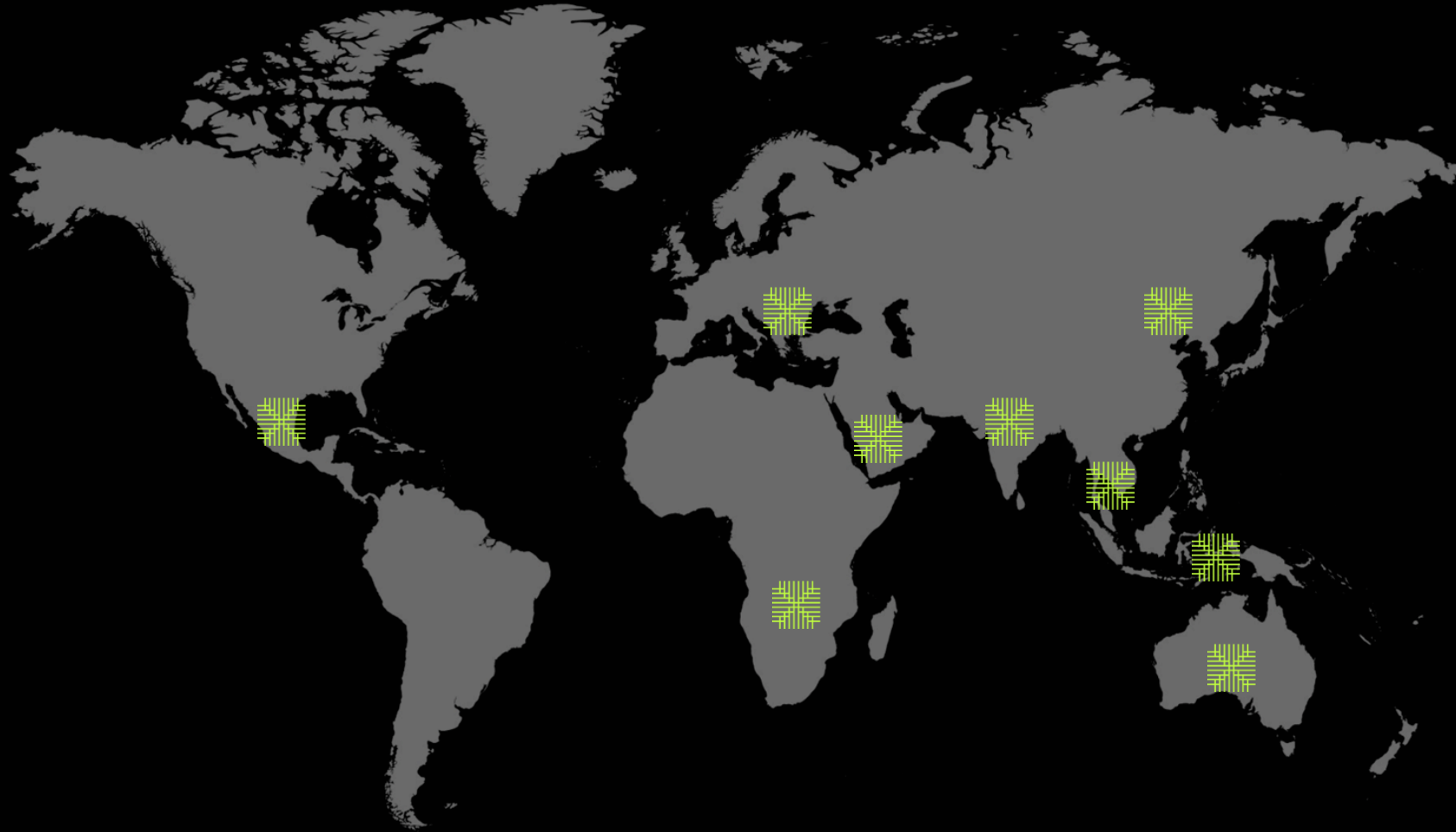
0..+40°C

95% humidity, non-condensing

Contact us

www.astrawireless.net

sales@astrawireless.net



Sales offices

America

Mexico City, Mexico

Europe

Istanbul, Turkey

Africa

Johannesburg, RSA

Asia

Dubai, UAE

New Delhi, India

Beijing, China

Jakarta, Indonesia

Kuala Lumpur, Malaysia

Karachi, Pakistan