

Reliable Connectivity: The Backbone of Modern Mining

Remote Control
& Automation



Enhanced Personnel
Safety



Operational
Efficiency



Cost
Optimization



**CONSISTENT 100 MBPS PER
VEHICLE IN ANY QUARRY,
REGARDLESS OF THE NUMBER
OF CONNECTED DEVICES**



ASTRADRIVE

Cuts Operational Costs While Ensuring Full Coverage

ASTRADRIVE integrates PtMP and ad-hoc mesh, reducing devices per vehicle and base stations for cost-effective, reliable coverage

Self-Optimizing, Fail-Safe Network

ASTRADRIVE technology maintains high performance, adapting seamlessly to changes in quarry shape

End-To-End Integrated Solution

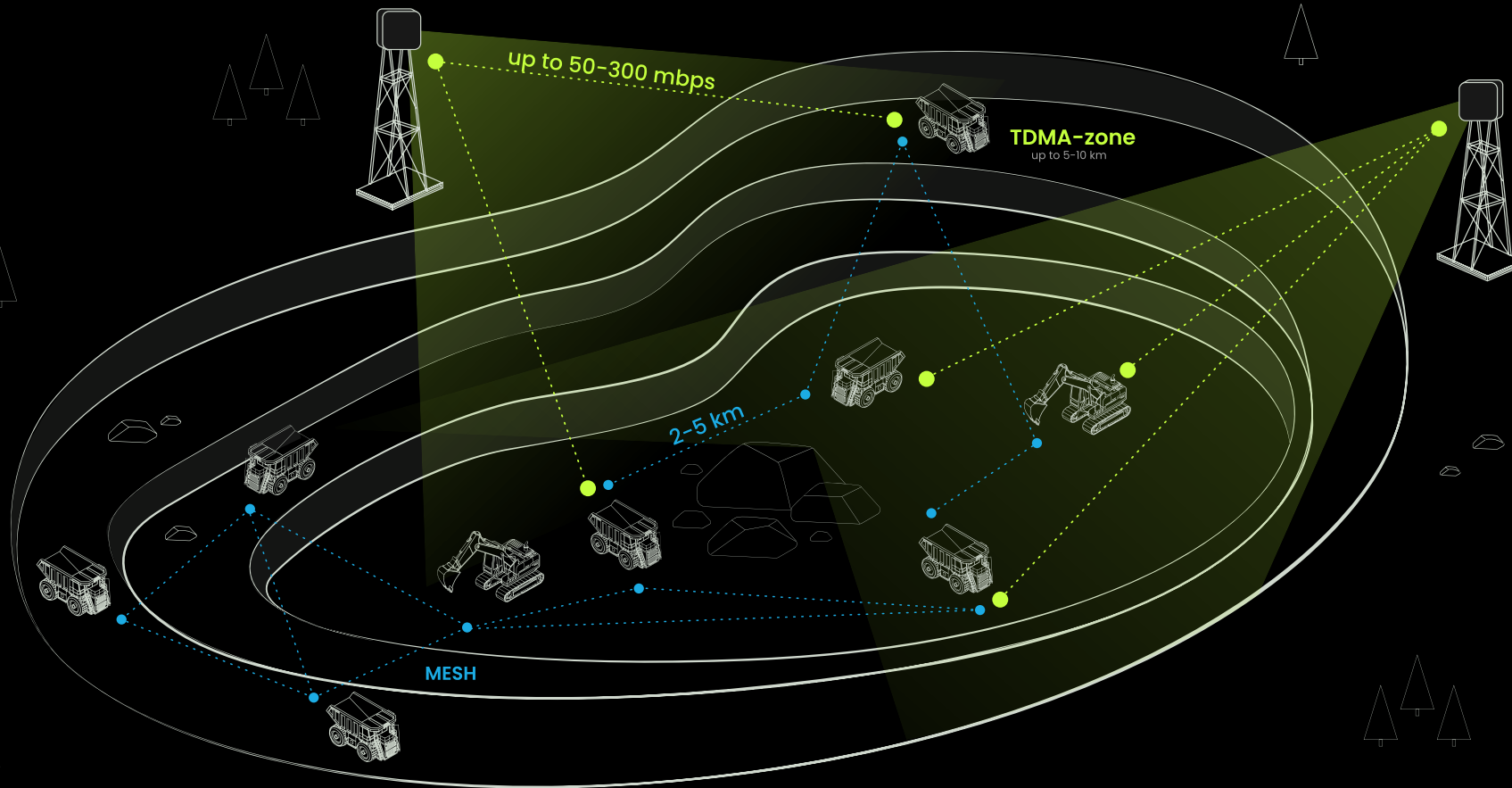
With perfectly integrated components designed to work in harmony

Multi-Channel Connectivity For 100 Mbps Per Vehicle

Each unit establishes dual communication channels, ensuring high-speed, fail-safe, and resilient connectivity throughout the journey

Intelligent Network Oversight & Optimization

AstraMUX switch continuously monitors the entire network, ensuring intelligent traffic balancing, proactive issue detection, and real-time resolution



Precision-Engineered For Mining Operations

ASTRADRIVE is engineered specifically for mining, featuring DC power, custom antennas, and dedicated power output – far beyond repurposed industrial tech. High-power 90° sector antennas provide long-range coverage, strategically positioned outside excavation zones to eliminate frequent equipment relocation

End-To-End Vendor Support

We design and optimize network coverage with precise mast placement and sector alignment, ensuring maximum efficiency, minimal hardware, and cost-effective scalability for mining operations

ANT-OMNI-10

Omnidirectional antenna with dual polarization, corrosion-resistant housing, and consistent 10 dBi gain across its 360° beamwidth and all operating frequencies



Terminal Unit

Onboard communication module enabling high-speed, carrier-grade data transmission between moving vehicles and fixed infrastructure — ensuring seamless traffic switching and aggregation



AstraMUX-GE4-S2

Industrial switch optimizing mobile network performance, enabling traffic balancing and seamless switching between moving and fixed infrastructure



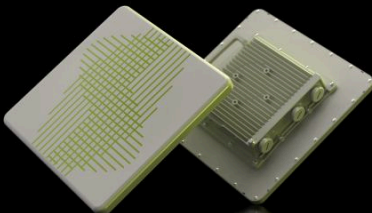
AstraMUX-GE8

Rack-mounted switch that balances and distributes traffic across channels in rapidly changing network environments. Support for additional RJ-45 and SFP port modules enables fast and cost-effective network scalability in the future



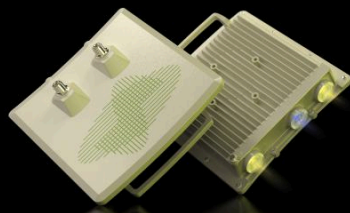
DRIVE E5-BSI

Sector base station with an integrated 16 dBi antenna, featuring a wide 90° beamwidth and throughput of up to 800 Mbps for high-performance coverage across its entire sector



DRIVE E5-BSE

Base station sector with N-type connectors for external antenna integration, delivering up to 800 Mbps throughput and ensuring high-performance connectivity across its entire coverage area



Develops high-capacity wireless systems for backhauls and access networks, designed for complex, high-performance environments

