

# Wireless Roots For Digital Crops

Remote Access  
& Security



Automation  
Of Field Operations



Operational  
Efficiency



Cost  
Optimization



**A WIRELESS  
ARCHITECTURE  
ENGINEERED FOR  
ENTIRE FARM  
COVERAGE**



# ASTRADRIVE

## Unmatched Long-Distance Performance

ASTRADRIVE is built for modern agriculture — maintaining stable links across open hectares, hilly terrain, and remote assets

## End-To-End Integrated Solution

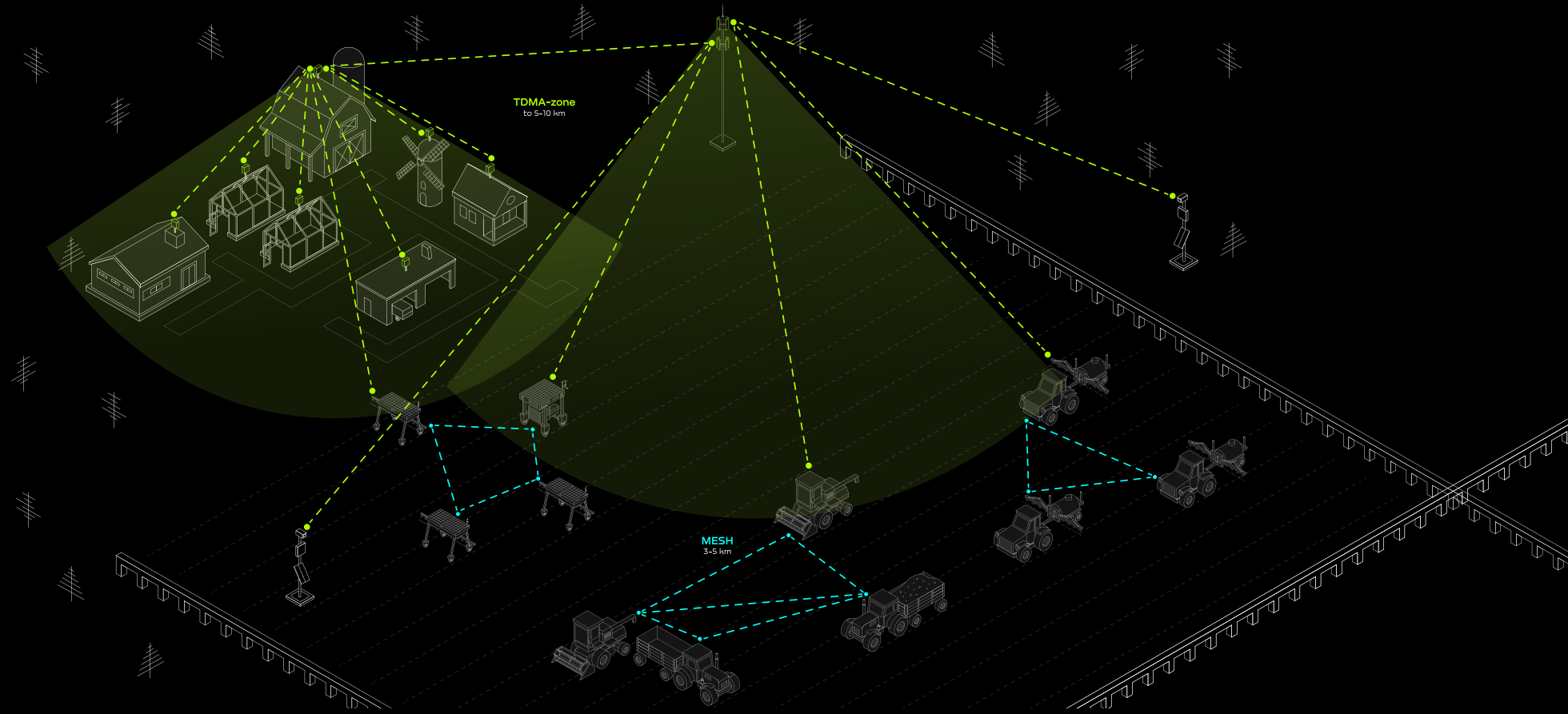
One unified solution to handle all agro-connectivity needs, with proven reliability and support

## Self-Optimizing, Fail-Safe Network

Automatically balances load, routes around interference, and adapts in real time to machinery movement — delivering always-on connectivity

## Adaptive Hybrid Connectivity

ASTRADRIVE combines TDMA for low-latency performance and MESH for extended coverage, ensuring stable connectivity across wide agricultural zones and challenging NLOS conditions, including obstructed terrain and moving vehicles



## Intelligent Network Oversight & Optimization

AstraMUX switch continuously monitors the entire network, ensuring intelligent traffic balancing, proactive issue detection, and real-time resolution

## End-To-End Vendor Support

We design and optimize network coverage with precise mast placement and sector alignment, ensuring maximum efficiency, minimal hardware, and cost-effective scalability for agro-industrial operations

## Precision-Engineered For Agro-Industrial Operations

ASTRADRIVE is purpose-built for large-scale farming — with rugged hardware, wide-area sector antennas, and dynamic routing designed to handle distance, motion, and uneven terrain. Strategically placed infrastructure provides broad coverage and keeps all equipment connected in the field

## ANT-OMNI-10

Omnidirectional antenna with dual polarization, corrosion-resistant housing, and consistent 10 dBi gain across its 360° beamwidth and all operating frequencies



## Terminal Unit

Onboard communication module enabling reliable data transmission between mobile farm equipment and field infrastructure, with seamless switching and aggregation



## AstraMUX-GE4-S2

Industrial switch optimizing mobile network performance, enabling traffic balancing and seamless switching between moving and fixed infrastructure



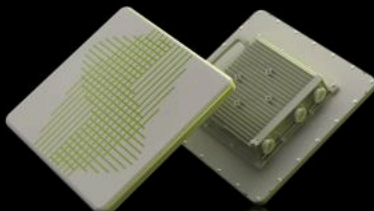
## AstraMUX-GE8

Rack-mounted switch that balances and distributes traffic across channels in rapidly changing network environments. Support for additional RJ-45 and SFP port modules enables fast and cost-effective network scalability in the future



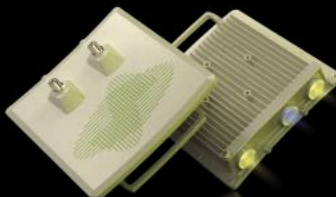
## DRIVE E5-BSI

Sector base station with an integrated 16 dBi antenna, featuring a wide 90° beamwidth and throughput of up to 800 Mbps for high-performance coverage across its entire sector



## DRIVE E5-BSE

Base station sector with N-type connectors for external antenna integration, delivering up to 800 Mbps throughput and ensuring high-performance connectivity across its entire coverage area



**Astrawireless**

Develops high-capacity wireless systems for backhauls and access networks, designed for complex, high-performance environments

