

TECHNICAL DATASHEET



MOBILEVIEW SOFTWARE



Part of the Extronics RTLS, MobileView is a powerful enterprise visibility software.

Track, locate, monitor, and manage your workers and assets in real time, from a single platform

IIoT integration – use data from Extronics, AeroScout, and 3rd party devices

Automatically triggered events that are configured to your criteria

Fully scalable, enterprise-class system

Improve safety and efficiency with real time information at your fingertips

Visualise workers and assets intuitively, with maps and historical trails

Improve business processes with automated events and alerts

Full audit trail and reporting for compliance and business improvements

Flexible, standards-based development platform, powered by AeroScout technology

Fits in with your processes - use on desktop, smartphone, or tablet

www.extronics.com | info@extronics.com | +44 (0) 845 277 5000

415234(5)

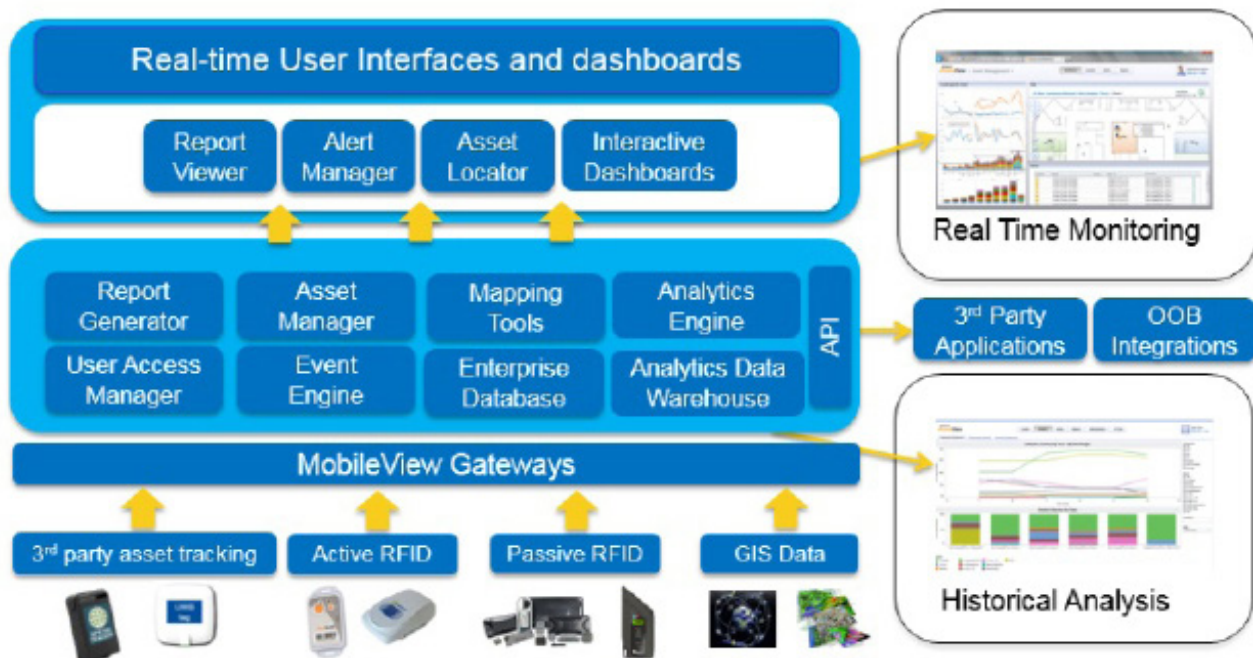
Disclaimer: Copyright (c) Extronics Ltd. The information contained in this document is subject to change without notice. Extronics cannot be held responsible for any errors or inaccuracies within this document.

Extronics Released

LICENSE TYPES



Worker/People Safety & Visibility	Includes worker location, evacuation monitoring/automatic mustering, check in/out, and worker duress
Evacuation Monitoring	For evacuation monitoring/automatic mustering only. Location information is only provided during an evacuation; for locating information at other times, use the Worker Safety application
Asset Management	For tracking people and assets
Condition Monitoring	For recording temperature, humidity, and voltage around assets
Passive RFID	For integrating passive RFID tags into the MobileView system
Rental	Rent access to the MobileView software for 100 plus workers for a set number of days, plus 15 days for set up. This includes Worker/People Safety & Visibility, Asset Management, Evacuation Monitoring, Check-in/out application, Worker Duress, Personnel Locator, Reports and Alerts), and also includes Maintenance & Support.
General license & integrations	A range of licenses for: <ul style="list-style-type: none"> - creating high availability systems - incorporating third party location and telemetry data into MobileView. - integration with Lenel OnGuard and/or IP relays - additional Data Warehouse database for business intelligence tools - analytics developer kit with up to 8 hours of support



SPECIFICATION



MOBILEVIEW SERVER

Operating system	Windows Server: 2016 (Data Center and Standard) 2012 R2 64-bit (Standard Edition) 2012 64-bit (Standard Edition) 2008 R2 64-bit (Standard and Enterprise Editions) 2008 64-bit (Standard and Enterprise Editions)
VMware	VMware ESX server version 4.1.x, 5.1.x, 5.5.x, 6.0.x, 6.5x Important note about VMware installation: MobileView Server can run in a virtual environment. We do not recommend, however, using virtual machines as large database servers due to potential performance degradation. Small and Medium environments can run the DB in a VM environment.
Database	MS SQL Server 2008, 2012, 2014, 2016, 2017 (Standard and Enterprise Editions)
Memory	Minimum 8 GB RAM – 16 GB RAM (based on deployment)
CPU	Minimum 2.4 GHz dual core – 8 cores (Extra-large deployment)
MOBILEVIEW CLIENT	
Operating system	Windows 7 64 bit Windows 8.1 64 bit Windows 10 64 bit with IE 11 (not Edge)
Internet browser	Internet Explorer 11.0x and above Google Chrome 74.0.3729.169 (64-bit) and above Adobe Flash Player 11 ActiveX Control and above
Memory	Minimum 4GB
MOBILEVIEW VERSIONS	
MobileView 5 versions	5.4.x, 5.3.x, 5.2.x, 5.1.x, 5.0.x

Ordering codes vary, depending on the license type and number of licenses needed. For more information or a quotation, please contact Extronics by emailing info@Extronics.com or calling +44 845 277 5000.